



RECP #: 752626

RECORDED 5/8/2019 AT 1:09 PM BK# 2620 PG# 1668
Debra K. Lee, CLERK OF LARAMIE COUNTY, WY PAGE 1 OF 1

STATE OF WYOMING CORNER RECORD

(In compliance with the CORNER PERPETUATION AND FILING ACT, Wyoming Statutes, 1997 Section 33-29-140, et. seq., and the Rules and Regulations of the Board of Registrations for Professional Engineers and Professional Land Surveyors)

NORTHEAST CORNER SECTION 1, T. 18 N., R. 62 W., 6TH P.M., LARAMIE COUNTY, WYOMING

GLO: SET A SANDSTONE 24X14X8, 18IN DEEP, WITH 6 MARKS ON EACH OF ITS 4 EDGES. SET TO THE CARDINAL POINTS AND RAISED A MOUND OF STONES AROUND IT FOR CORNER TO TOWNSHIPS 18 AND 19 NORTH, RANGES 61 AND 62 WEST.

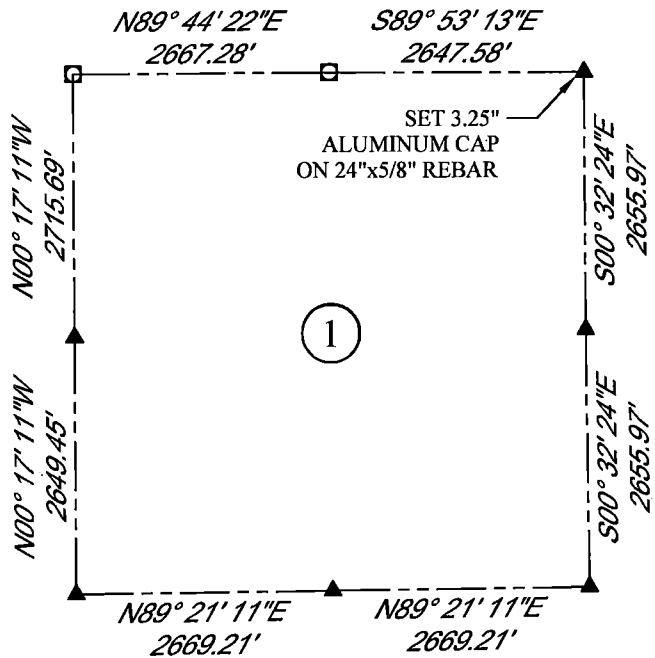
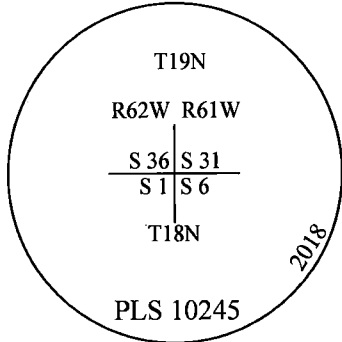
FOUND: NOTHING. SET ALUMINUM CAP AT PROPORTIONATE (DOUBLE) DISTANCE.



SCALE: NONE

NORTH DETERMINED BY
G.P.S OBSERVATIONS

SET 3.25" ALUMINUM CAP ON
REBAR, AT SURFACE, STAMPED AS
SHOWN. SET 2 MAG NAILS IN 2
FENCE POSTS APPROXIMATELY
13' NORTHEASTERLY AND 18'
NORTHWESTERLY.



LEGEND:

- FOUND BLM CAP
- FOUND USFS CAP
- FOUND STONE
- FOUND PRIVATE MONUMENT
- ◆ CALCULATED POSITION
- ▲ SET MONUMENT (LS10245)
- SECTION LINE

DATE OF FIELD WORK: 9/20/2018 OFFICE REFERENCE: MERIDEN

CROSS INDEX DIAGRAM

	1	2	3	4	5	6	7	8	9	10	11	12	13	14	15	16	17	18	19	20	21	22	23	24	25	
A																										
B																										
C		6																								
D			5																							
E				4																						
F					3																					
G						2																				
H							1																			
I																										
J																										
K																										
L																										
M																										
N																										
O																										
P																										
Q																										
R																										
S																										
T																										
U																										
V																										
W																										
X																										
Y																										
Z																										
	1	2	3	4	5	6	7	8	9	10	11	12	13	14	15	16	17	18	19	20	21	22	23	24	25	

WOOD
2615 AVIATION DRIVE
SHERIDAN, WY 82801
PH: 307-675-6400

THIS CORNER RECORD WAS
PREPARED BY ME OR UNDER
MY DIRECTION AND
SUPERVISION,
SEAL AND SIGNATURE

wood.

